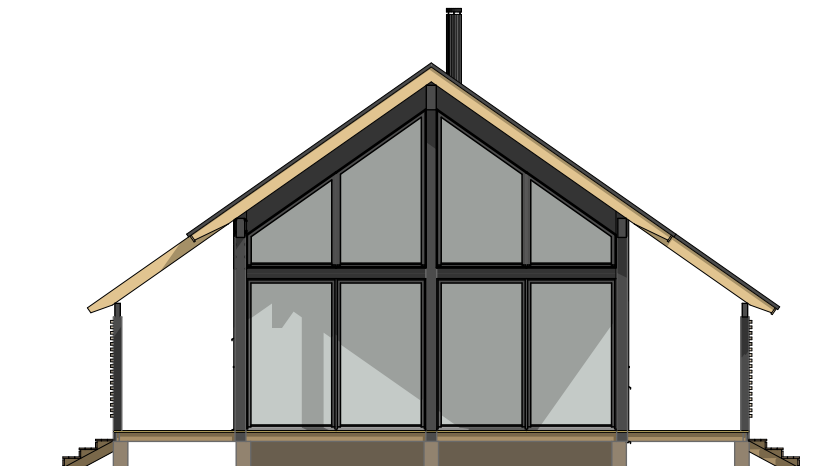


Gross floor area: 75,5 + 24,5 m²

Floor area: 68,5 + 23,5 m²

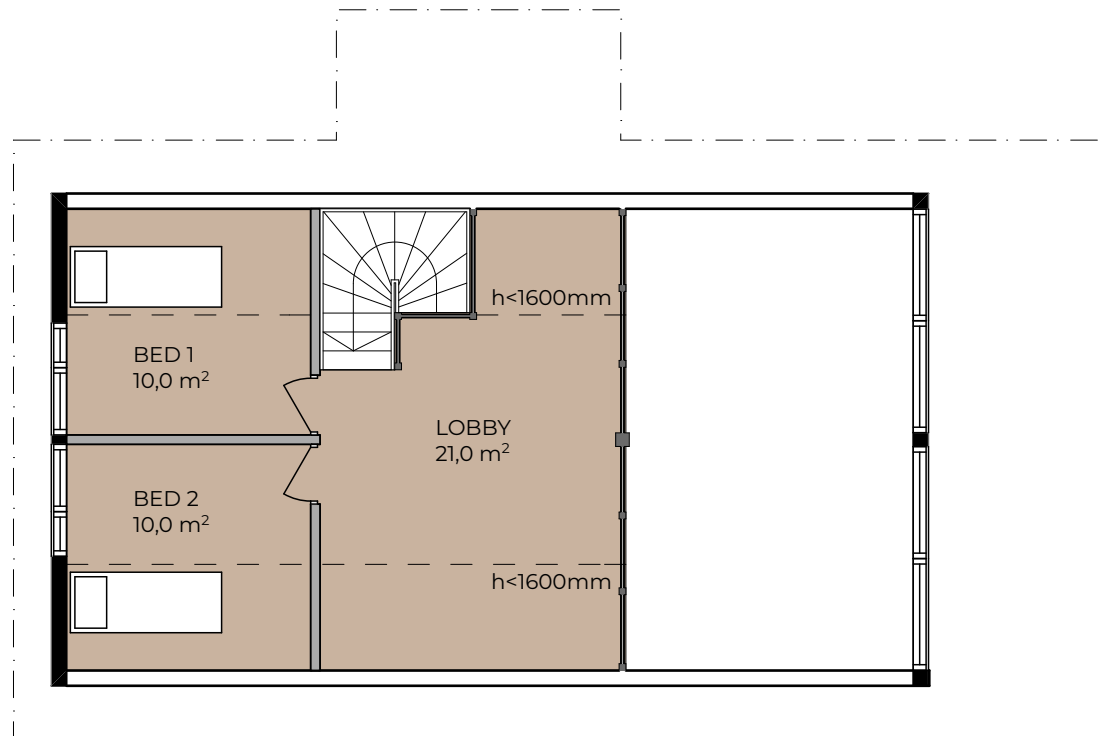
Volume: 375 m³



Gross floor area: 75,5 + 24,5 m²

Floor area: 68,5 + 23,5 m²

Volume: 375 m³



Gross floor area: 75,5 + 24,5 m²

Floor area: 68,5 + 23,5 m²

Volume: 375 m³

