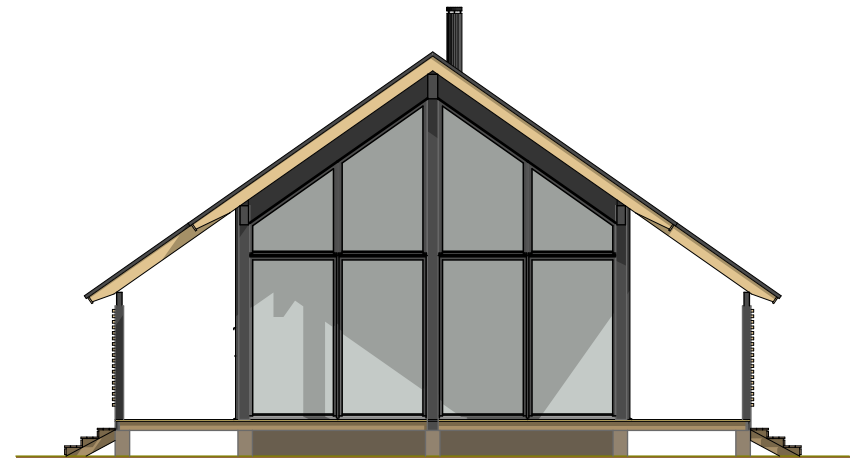


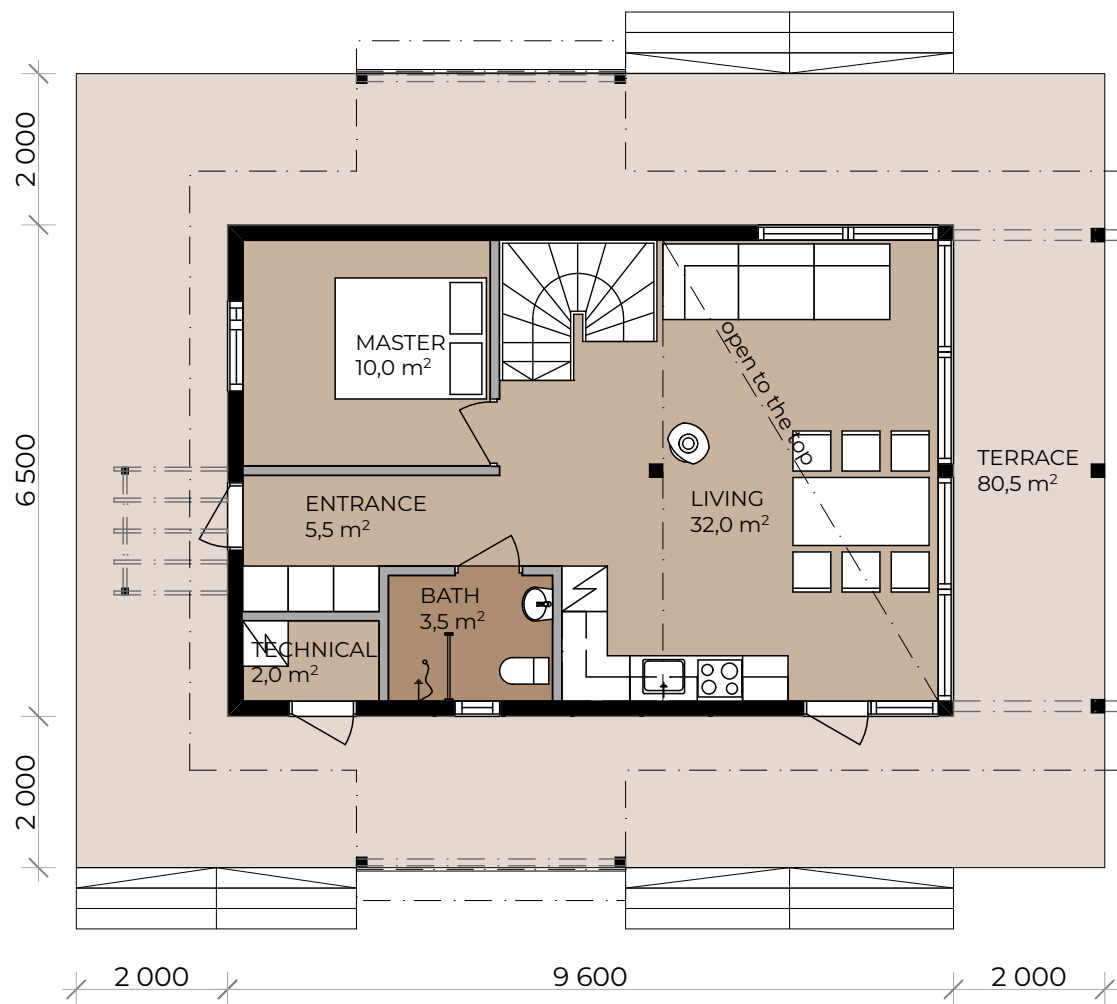
Gross floor area: 62,5 + 18,0 m²
Floor area: 56 + 17,5 m²
Volume: 310 m³



Gross floor area: 62,5 + 18,0 m²

Floor area: 56 + 17,5 m²

Volume: 310 m³



Gross floor area: 62,5 + 18,0 m²

Floor area: 56 + 17,5 m²

Volume: 310 m³

